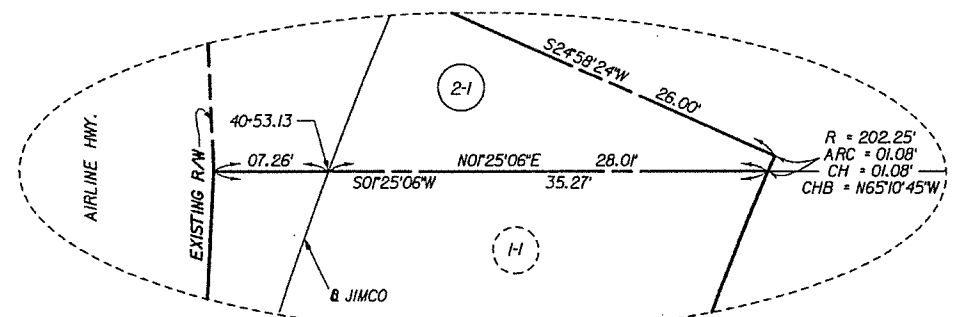
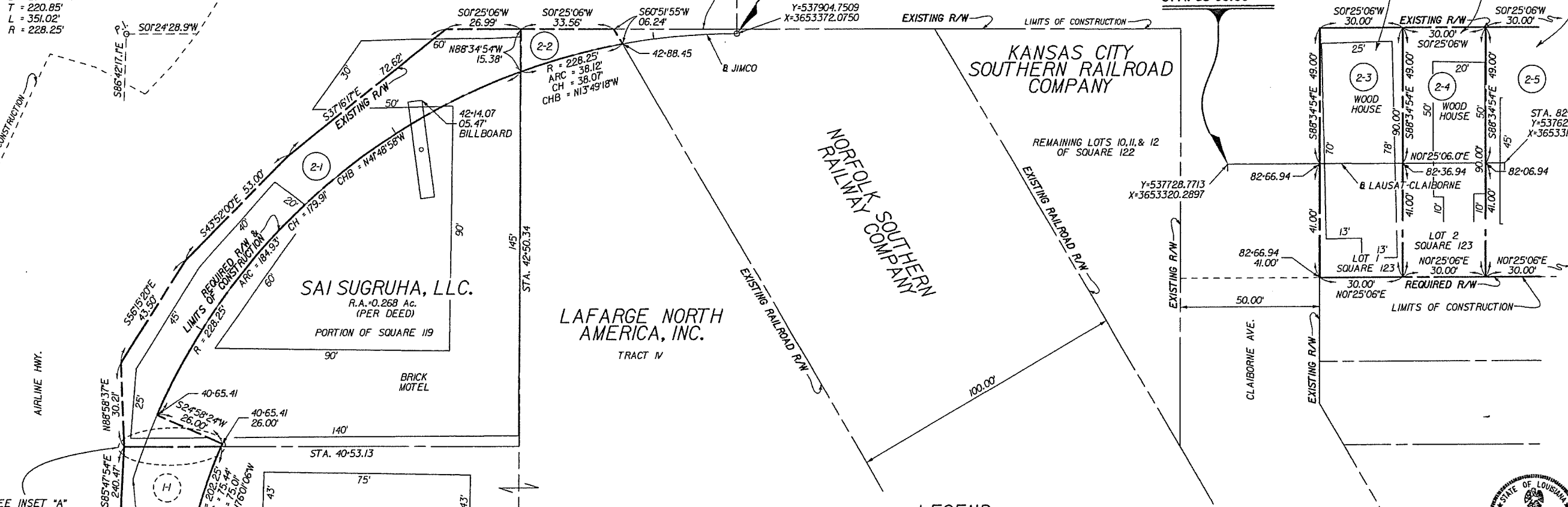


SOUTHEASTERN EAST OF MISSISSIPPI RIVER LAND DISTRICT T12S - RIOE SECTION 46

NOTES:
 1. ALL PIPES AND MONUMENTS SHOWN HEREON WERE FOUND.
 2. THE COORDINATES AND BEARINGS SHOWN HEREON ARE BASED ON LOUISIANA STATE PLANE COORDINATE SYSTEM, 1702 SOUTH ZONE (NAD 83 (CORS96) EPOCH 2002.00) TO CONVERT FROM GRID BEARINGS TO TRUE BEARINGS USE: 00°35'17.9" \pm
 BASE STATIONS:
 DH9596.DSTR DESTRAHAN H.S. CORS ARP
 LAT=N29°57'52.39572" LONG=W90°22'56.00656" Y=533851.99 X=3581993.26
 DH9599.NOLA LOYOLA UNIV. CORS ARP
 LAT=N29°56'03.73272" LONG=W90°07'12.64630" Y=523659.45 X=3665080.74
 DJ9601.ENG6 ENGLISH TURN 6 CORS ARP
 LAT=N29°52'45.04422" LONG=W89°56'31.48385" Y=504231.36 X=3721732.37
 3. DISTANCES SHOWN ARE HORIZONTAL GROUND DISTANCES. TO CONVERT DISTANCES DERIVED FROM COORDINATES SHOWN HEREON TO HORIZONTAL GROUND DISTANCES, USE SCALE FACTOR: 0.99992586



CURVE DATA JIMCO
 P.I. STA. 41+99.90
 Y = 538125.5372
 X = 3653377.5019
 $\Delta = 88°06'46.0"$ RT.
 D = 25°06'07.9"
 T = 220.85'
 L = 351.02'
 R = 228.25'



LEGEND

	EXISTING R/W		REQUIRED R/W		RIGHT OF WAY LINE
	EXISTING C. of A.		REQUIRED C. of A.		CONTROL OF ACCESS
	EXIST R/W & EXIST C. of A.		REQ'D R/W & REQ'D C. of A.		RIGHT OF WAY & CONTROL OF ACCESS
					LIMITS OF CONSTRUCTION
					LOT LINE
					APPARENT PROPERTY LINE
					EXISTING SERVITUDE LINE
					SECTION LINE

PARCEL	OWNER	ACQUISITION	AREA
2-5	EMMA ROSE HALL	C.O.B. 857 FOLIO 672 MARCH 23,1976	0.062 Ac.
2-4	ARTHUR ARGEYO, ET UX.	C.O.B. 670 FOLIO 82 DECEMBER 29,1967	0.062 Ac.
2-3	ORENER J. PHILLIPS HILLARD, ET AL.	C.O.B. 2878 FOLIO 920 AUGUST 27,1993	0.062 Ac.
2-2	LAFARGE NORTH AMERICA, INC.	C.O.B. 3217 FOLIO 353 JANUARY 14,2008	0.008 Ac.
2-1	SAI SUGRUHA, L.L.C.	BOOK 3338 PAGE 903 SEPTEMBER 16,2015	0.090 Ac.

STATE OF LOUISIANA
 ANDREW D. SHREAD
 License No. 5087
 PROFESSIONAL
 LAND SURVEYOR
 3/7/19

SHEET NUMBER	JEFFERSON	CONTROL SECTION	000-26, 423-01 B 430-01	STATE PROJECT	H-013042
COMPUTED	H.L.H.	CHECKED	J.E.P.	DATE	03/07/19
DETAILED	A.D.S.	CHECKED	A.D.S.	SCALE	1"=20'
RIGHT OF WAY MAP STATE PROJECT NO. H.013042 CAUSEWAY BLVD.-EARHART EXPRESSWAY PH 1A JEFFERSON PARISH ROUTES LA 3046 & LA 3139					
SHREAD KUYRKENDALL & ASSOC.					
DATE	11/4/19	REVISION	ADDED LIMITS OF CONSTRUCTION LABEL	BY	
DATE	5/23/19	REVISION	ADDED LIMITS OF CONSTRUCTION LABEL	BY	
FILE NO. 04-19-1-009 R/W SHEET NO. 2					